

# CLOTH SALE



Over the last 100 years, Hamilton Operatic Society (HOS) has created one of the largest collections of backdrop and specialty cloths in New Zealand, all of which are available for hire and a selected few are now for sale.

We would love to see these continue to be used within the New Zealand theatre community. A great opportunity to add cloths to your own theatre store stock and save on hire costs!

## TERMS OF SALE

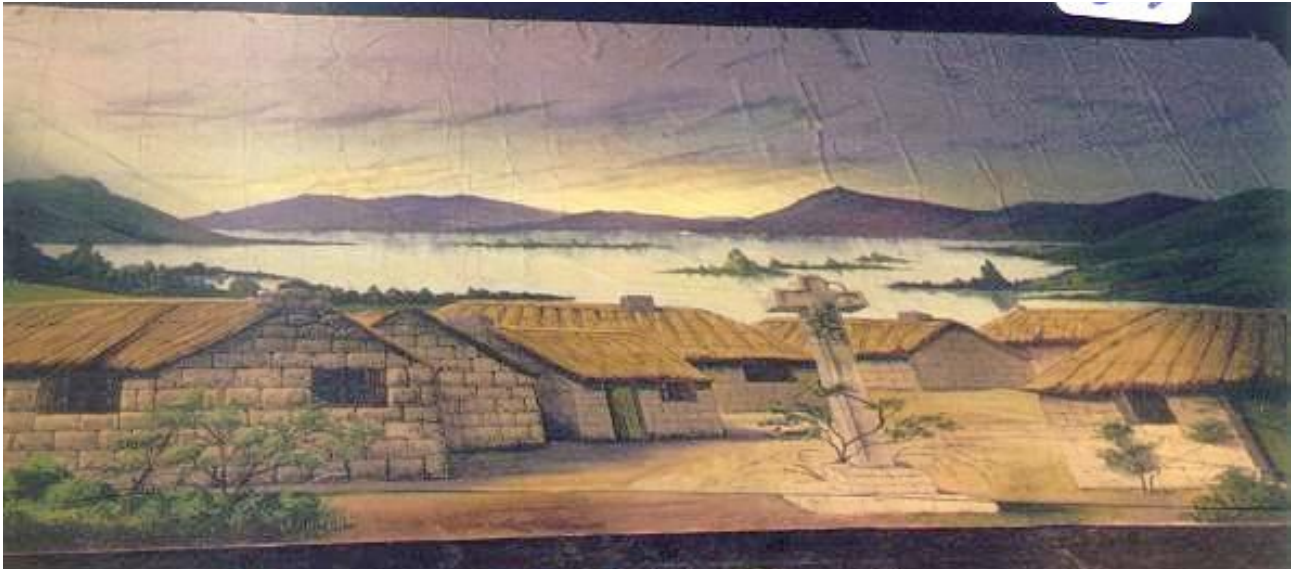
1. HOS makes no claims to the exactness of the cloth shown in the pictures in regard to dimensions/size, colours and condition or any other matter. If you would like to view the cloth before making an offer please make an appointment with Margot, [margot@hamiltonoperatic.co.nz](mailto:margot@hamiltonoperatic.co.nz)
2. All offers should be GST inclusive
3. HOS reserve the right to reject any offer that we deem to be too low.
4. The cloth(s) will be released to you when we receive proof of your payment into our bank account.
5. The purchaser is responsible for costs associated with transporting the cloth away from Hamilton. Mainfreight will pick up from HOS for a fee of \$30. They can wrap the cloth in plastic ready for shipping for \$10 and then the shipping is dependent on the weight and dimensions as well as the destination. A quote can be received and payment made before shipping. Pick up is available.



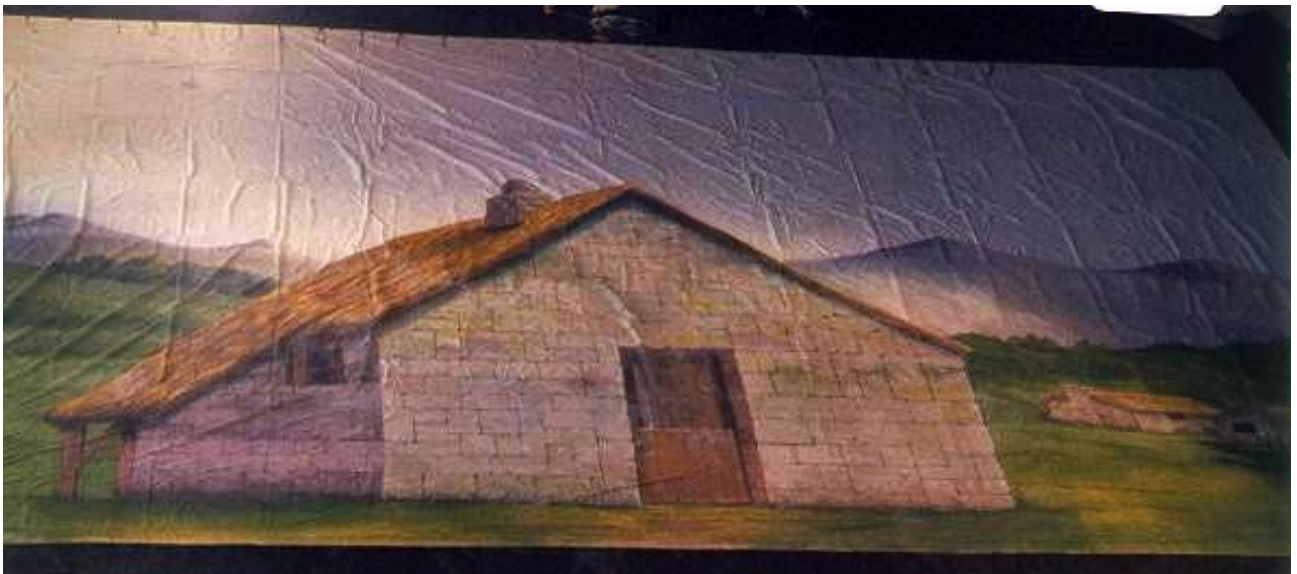
Cloth #	F3-12
Show	Brigadoon
Year	1963
Size (approx)	12x7 m
Scenic Artist	The late Wilf Conroy
Currently Fire Retardant?	No



Cloth #	F3-10
Show	Brigadoon
Year	1963
Size (approx)	12x7 m
Scenic Artist	The late Wilf Conroy
Currently Fire Retardant?	No



Cloth #	F3-09
Show	Brigadoon
Year	1963
Size (approx)	12x7 m
Scenic Artist	The late Wilf Conroy
Currently Fire Retardant?	No



Cloth #	F1-18
Show	Brigadoon
Year	1963
Size (approx)	12x7 m
Scenic Artist	The late Wilf Conroy
Currently Fire Retardant?	No



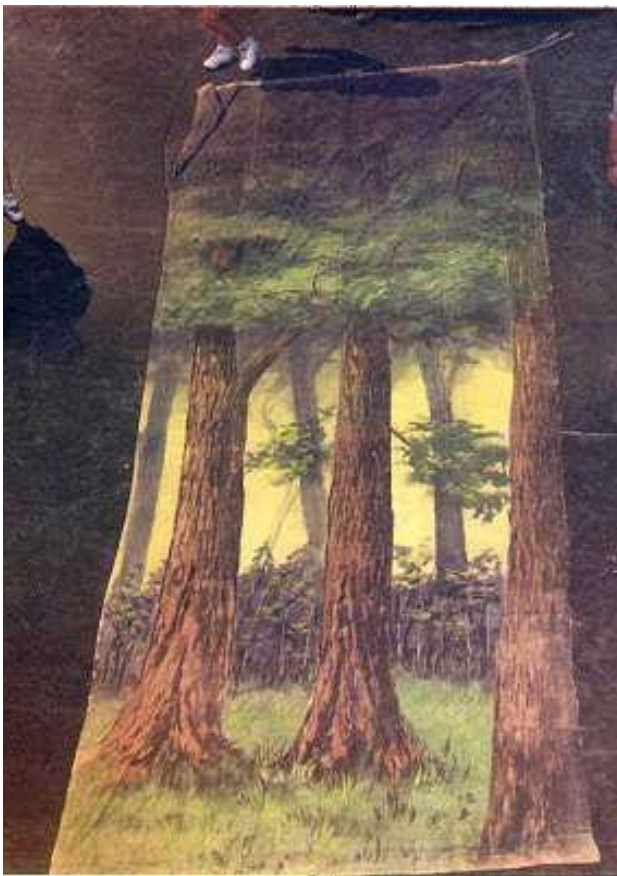
Cloth #	F3-19
Show	Brigadoon
Year	1963
Size (approx)	12x7 m – cut cloth
Scenic Artist	The late Wilf Conroy
Currently Fire Retardant?	No



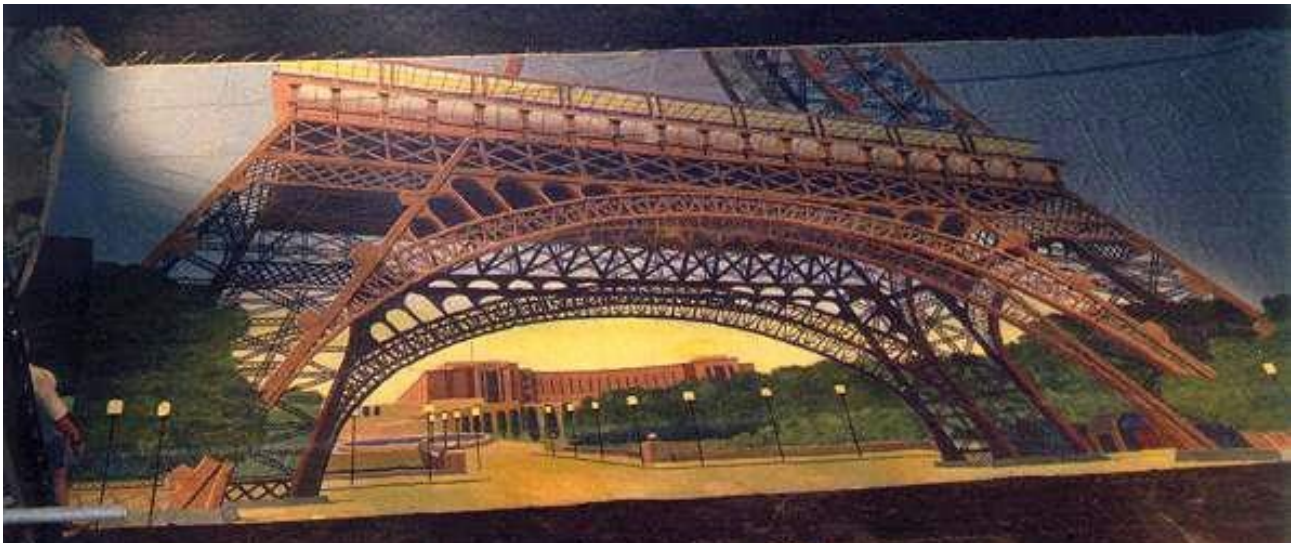
Cloth #	F4-08
Show	Brigadoon
Year	1963
Size (approx)	12x7 m – cut cloth
Scenic Artist	The late Wilf Conroy
Currently Fire Retardant?	No



Cloth #	F4-13
Show	Brigadoon
Year	1963
Size (pprox.)	12x7 m – cut cloth
Scenic Artist	The late Wilf Conroy
Currently Fire Retardant?	No



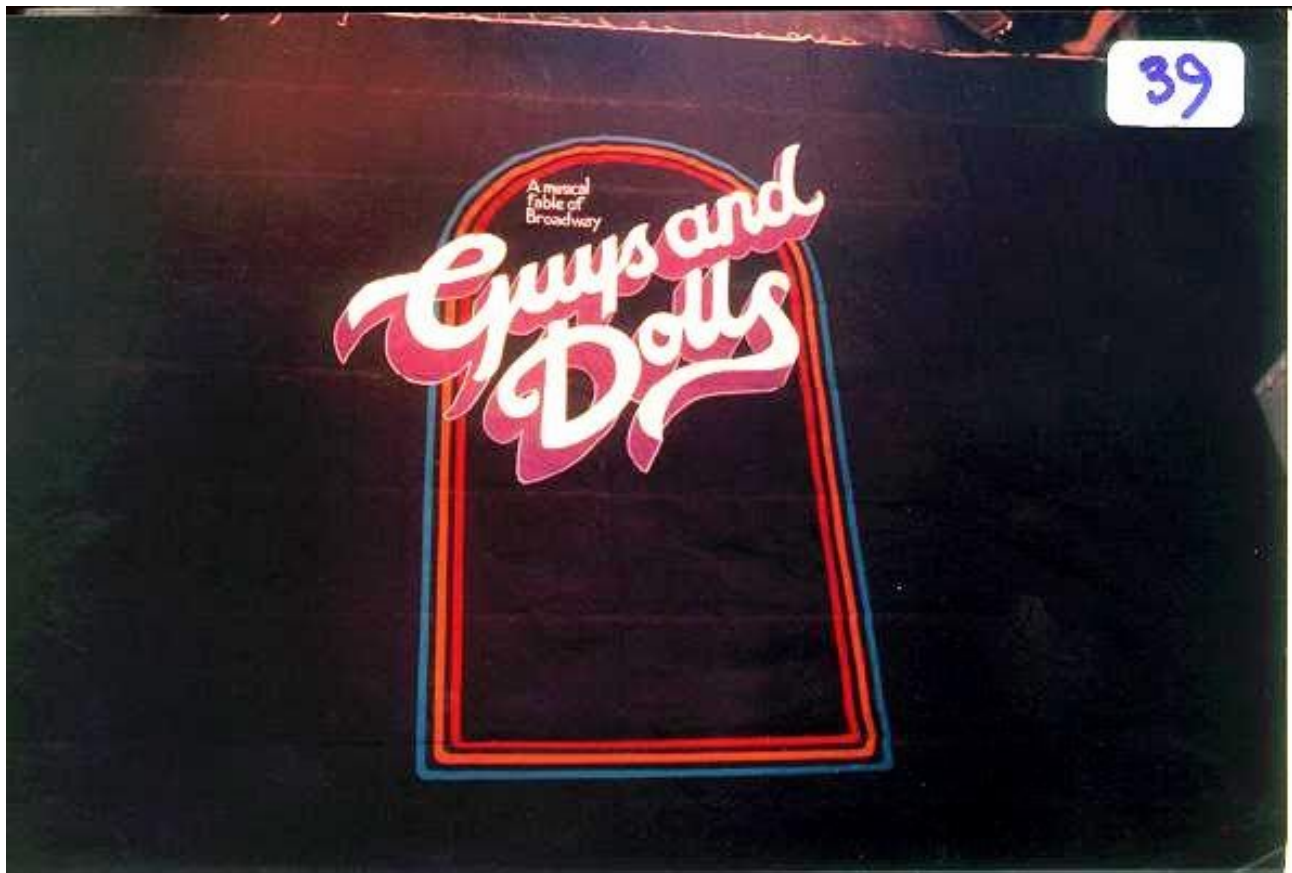
Cloth #	F4-17
Show	Brigadoon
Year	1963
Size (approx)	2x7 m
Scenic Artist	The late Wilf Conroy
Currently Fire Retardant?	No



Cloth #	49
Show	Gigi
Year	1978
Size (approx)	12x7 m
Scenic Artist	The late Wilf Conroy
Currently Fire Retardant?	No



Cloth #	44
Show	Gigi
Year	1978
Size (approx)	12x7 m
Scenic Artist	The late Wilf Conroy
Currently Fire Retardant?	No



Cloth #	39
Show	Guys and Dolls
Year	1983
Size (approx)	12x7 m
Scenic Artist	The late Wilf Conroy
Currently Fire Retardant?	No

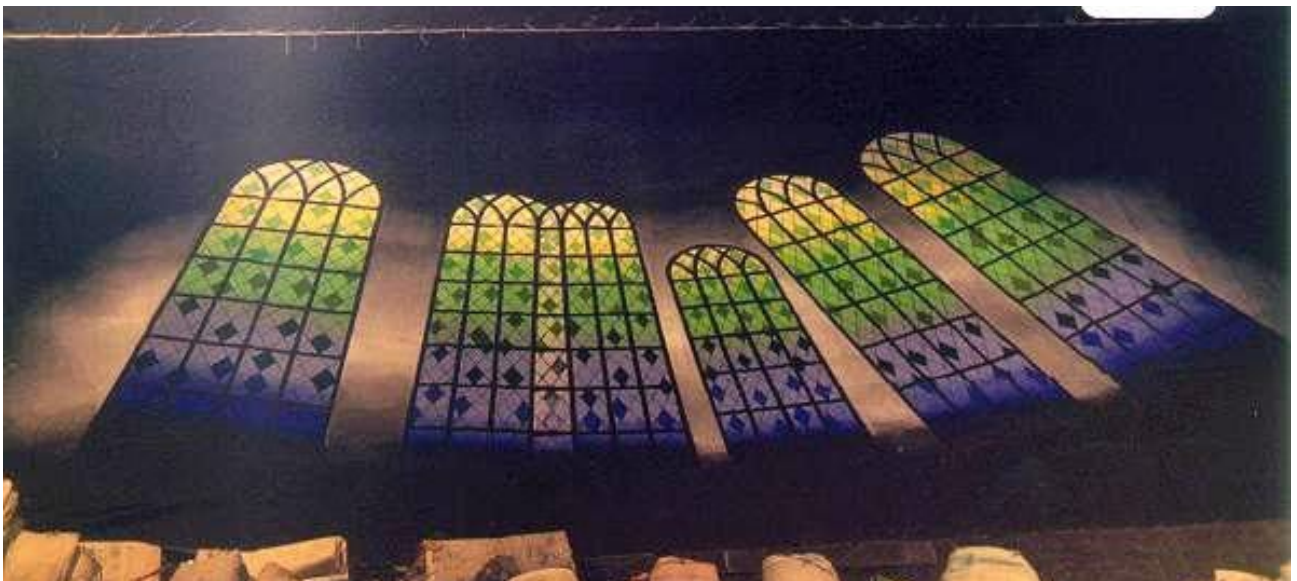


Cloth #	F1-17
Show	The Sound of Music
Year	1967 or 1984
Size (approx)	12x7 m – cut cloth
Scenic Artist	The late Wilf Conroy
Currently Fire Retardant?	No



Cloth #	F3-21
Show	The Sound of Music
Year	1967 or 1984
Size (approx)	3 pieces
Scenic Artist	The late Wilf Conroy
Currently Fire Retardant?	No





Cloth #	4-3
Show	Aloha!
Year	1981
Size (approx)	12x7 m
Scenic Artist	The late Wilf Conroy
Currently Fire Retardant?	No



Cloth #	4-04
Show	Aloha!
Year	1981
Size (approx)	12x7 m – cut cloth
Scenic Artist	The late Wilf Conroy
Currently Fire Retardant?	No



Cloth #	4-06
Show	Aloha!
Year	1981
Size (approx)	12x7 m – cut cloth
Scenic Artist	The late Wilf Conroy
Currently Fire Retardant?	No



Cloth #	4-09
Show	Aloha!
Year	1981
Size (approx)	12x7 m – cut cloth
Scenic Artist	The late Wilf Conroy
Currently Fire Retardant?	No